

Tracey Manor Apartments

The unique and home life atmosphere created in this perfect rental community just minutes away from shopping, banking, and your medical needs. Tracey Manor is nestled into a peaceful neighborhood of rural St. Cloud. Due to federal guidelines, minimum age for these homes is 62.

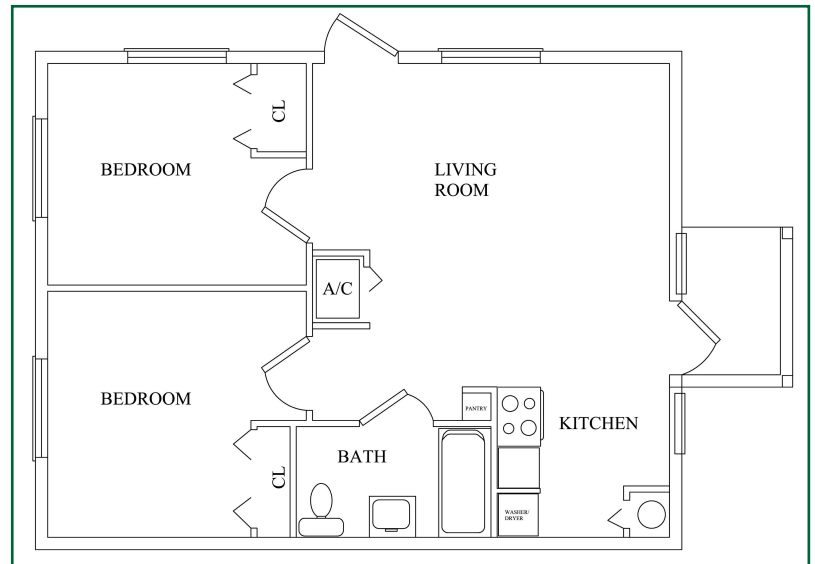


On the corner of 19th Street and Crawford Street
St. Cloud, FL 34769
407.931.2990



Features and Amenities

- 14 Units - Two Bedroom/Two Full Bath Apartments
- Wall To Wall Carpets
- Blinds
- Ceiling Fans
- Color Coordinated Appliances
- Fully Equipped Kitchen
- Washer/Dryer
- Concrete Block Construction
- Covered Picnic Area
- Medical/Shopping Transportation
- Grounds Maintenance



Council on Aging Services Available to Seniors

- Case Management
- Transportation
- Housekeeping
- Personal Care
- Nutrition
- Congregate Meals
- Pharmaceutical Assistance
- And much more

